



## Scanco Multi-Bin for Manufacturers

*Complete visibility throughout the manufacturing process.*

Used in conjunction with Scanco Manufacturing 100 or Operations Management, Scanco Multi-Bin will add complete control and visibility into your supply chain.

Item Code	Bin Location	Location Type	Region	Addr	Pick Priority	Percent Avail	Avail Per Counts
000	W309	Pick	AMETS	W		100.0%	
000	W401	Pick	AMETS	W		100.0%	
000	W402	Pick	AMETS	W		100.0%	
000	W403	Pick	AMETS	W		100.0%	
000	Q1	Overflow	OVER	O		45.0%	
000	Q2	Overflow	OVER	O		87.0%	
000	Q3	Overflow	OVER	O		87.0%	
000	Q4	Overflow	OVER	O		70.0%	
000	Q5	Overflow	OVER	O		100.0%	
000	Q6	Overflow	OVER	O		100.0%	
000	Q7	Overflow	OVER	O		100.0%	
000	Q8	Overflow	OVER	O		100.0%	
000	Q9	Overflow	OVER	O		100.0%	
000	Q10	Overflow	OVER	O		100.0%	
000	Q11	Overflow	OVER	O		100.0%	
000	Q12	Overflow	OVER	O		100.0%	
000	Q13	Overflow	OVER	O		100.0%	
000	Q14	Overflow	OVER	O		100.0%	
000	Q15	Overflow	OVER	O		100.0%	
000	Q16	Overflow	OVER	O		100.0%	
000	Q17	Overflow	OVER	O		100.0%	
000	Q18	Overflow	OVER	O		100.0%	
000	Q19	Overflow	OVER	O		100.0%	
000	Q20	Overflow	OVER	O		100.0%	
000	Q21	Overflow	OVER	O		100.0%	
000	Q22	Overflow	OVER	O		100.0%	
000	Q23	Overflow	OVER	O		100.0%	
000	Q24	Overflow	OVER	O		100.0%	
000	Q25	Overflow	OVER	O		100.0%	
000	Q26	Overflow	OVER	O		100.0%	
000	Q27	Overflow	OVER	O		100.0%	
000	Q28	Overflow	OVER	O		100.0%	
000	Q29	Overflow	OVER	O		100.0%	
000	Q30	Overflow	OVER	O		100.0%	
000	Q31	Overflow	OVER	O		100.0%	
000	Q32	Overflow	OVER	O		100.0%	
000	Q33	Overflow	OVER	O		100.0%	
000	Q34	Overflow	OVER	O		100.0%	
000	Q35	Overflow	OVER	O		100.0%	
000	Q36	Overflow	OVER	O		100.0%	
000	Q37	Overflow	OVER	O		100.0%	
000	Q38	Overflow	OVER	O		100.0%	
000	Q39	Overflow	OVER	O		100.0%	
000	Q40	Overflow	OVER	O		100.0%	
000	Q41	Overflow	OVER	O		100.0%	
000	Q42	Overflow	OVER	O		100.0%	
000	Q43	Overflow	OVER	O		100.0%	
000	Q44	Overflow	OVER	O		100.0%	
000	Q45	Overflow	OVER	O		100.0%	
000	Q46	Overflow	OVER	O		100.0%	
000	Q47	Overflow	OVER	O		100.0%	
000	Q48	Overflow	OVER	O		100.0%	
000	Q49	Overflow	OVER	O		100.0%	
000	Q50	Overflow	OVER	O		100.0%	
000	Q51	Overflow	OVER	O		100.0%	
000	Q52	Overflow	OVER	O		100.0%	
000	Q53	Overflow	OVER	O		100.0%	
000	Q54	Overflow	OVER	O		100.0%	
000	Q55	Overflow	OVER	O		100.0%	
000	Q56	Overflow	OVER	O		100.0%	
000	Q57	Overflow	OVER	O		100.0%	
000	Q58	Overflow	OVER	O		100.0%	
000	Q59	Overflow	OVER	O		100.0%	
000	Q60	Overflow	OVER	O		100.0%	
000	Q61	Overflow	OVER	O		100.0%	
000	Q62	Overflow	OVER	O		100.0%	
000	Q63	Overflow	OVER	O		100.0%	
000	Q64	Overflow	OVER	O		100.0%	
000	Q65	Overflow	OVER	O		100.0%	
000	Q66	Overflow	OVER	O		100.0%	
000	Q67	Overflow	OVER	O		100.0%	
000	Q68	Overflow	OVER	O		100.0%	
000	Q69	Overflow	OVER	O		100.0%	
000	Q70	Overflow	OVER	O		100.0%	
000	Q71	Overflow	OVER	O		100.0%	
000	Q72	Overflow	OVER	O		100.0%	
000	Q73	Overflow	OVER	O		100.0%	
000	Q74	Overflow	OVER	O		100.0%	
000	Q75	Overflow	OVER	O		100.0%	
000	Q76	Overflow	OVER	O		100.0%	
000	Q77	Overflow	OVER	O		100.0%	
000	Q78	Overflow	OVER	O		100.0%	
000	Q79	Overflow	OVER	O		100.0%	
000	Q80	Overflow	OVER	O		100.0%	
000	Q81	Overflow	OVER	O		100.0%	
000	Q82	Overflow	OVER	O		100.0%	
000	Q83	Overflow	OVER	O		100.0%	
000	Q84	Overflow	OVER	O		100.0%	
000	Q85	Overflow	OVER	O		100.0%	
000	Q86	Overflow	OVER	O		100.0%	
000	Q87	Overflow	OVER	O		100.0%	
000	Q88	Overflow	OVER	O		100.0%	
000	Q89	Overflow	OVER	O		100.0%	
000	Q90	Overflow	OVER	O		100.0%	
000	Q91	Overflow	OVER	O		100.0%	
000	Q92	Overflow	OVER	O		100.0%	
000	Q93	Overflow	OVER	O		100.0%	
000	Q94	Overflow	OVER	O		100.0%	
000	Q95	Overflow	OVER	O		100.0%	
000	Q96	Overflow	OVER	O		100.0%	
000	Q97	Overflow	OVER	O		100.0%	
000	Q98	Overflow	OVER	O		100.0%	
000	Q99	Overflow	OVER	O		100.0%	
000	Q100	Overflow	OVER	O		100.0%	

### Track one item in multiple bin locations.

Full FIFO and FEFO data are always at your fingertips. FIFO data is retained for all inventory valuations. For lot and serialized inventory, the system provides the create date, the date received, and the expiration date. For Standard Cost, Average Cost, Fifo, and Lifo valuations, the system offers available inventory by the last received time in locations.

### Real-Time Manufacturing Features

- Dynamic Inventory
- Inventory Allocations
- Palleting & License Plating
- Expiration Date Lot Control

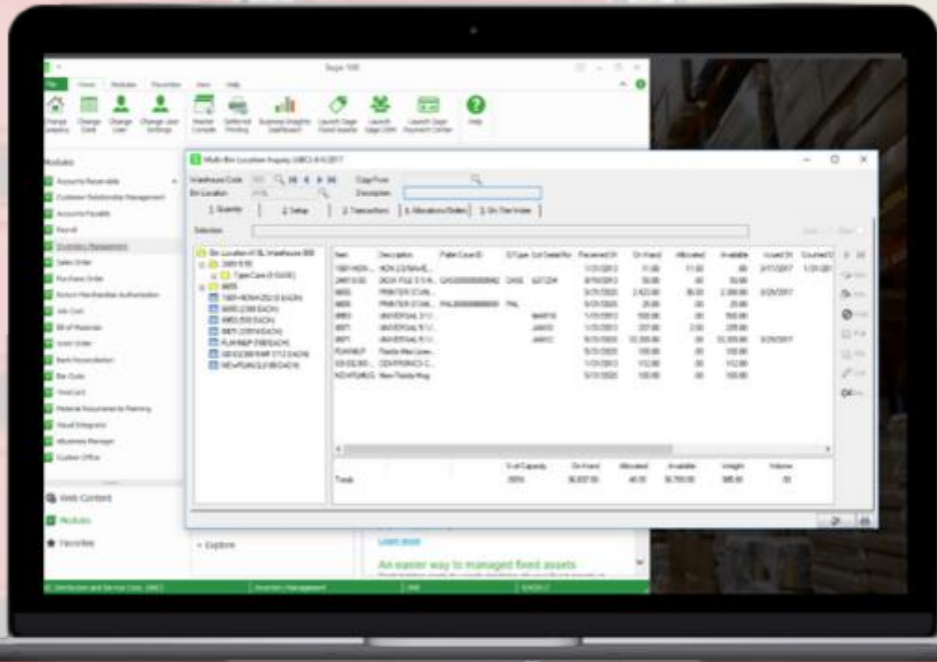
Parts inventory can be pre-allocated or issued immediately out from work tickets. Pre-allocated inventory can be used to guide pickers to pick goods based on your designed pick policies and in the order that's the most efficient path to pick in your warehouse.

Auto allocations for Work Tickets allow you to define rules on how you want inventory to be allocated.



FOR MORE INFORMATION OR TO SCHEDULE A DEMO:  
[www.scanco.com](http://www.scanco.com)

# Scanco Multi-Bin for Manufacturers



## 1 Track by Bin Location or Track Pallet/Bin Locations Together

## 2 Work Tickets & Pick Sheet Output

- ✓ Print in the order/path you want to pick
- ✓ Print other zones & locations where inventory is located
- ✓ Can choose to sort by FIFO order, FEFO order, or Lot Numbers

## 3 Continual Location Capacity Computations

- ✓ Track availability by location
- ✓ Optimize system performance

- ✓ Advise where to store goods

- ✓ Compute capacity by volume or quantity

## 4 Replenishment Batches Computes Location in Two Strategies:

- ✓ Minimum setup designated for items in locations and zones
- ✓ Minimum required to fulfill Sales Order & Work Ticket Parts

## 5 Refine Replenishment Needs for Production Zones

- ✓ Replenishment batches accessed on handhelds, so can pick/transfer without paperwork
- ✓ System includes ability to print picking sheets and can transfer on the screen



FOR A FULL LIST OF FEATURES OR TO SCHEDULE A DEMO:  
[www.scanco.com](http://www.scanco.com)

Sage Tech Partner  
Plus